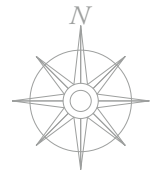


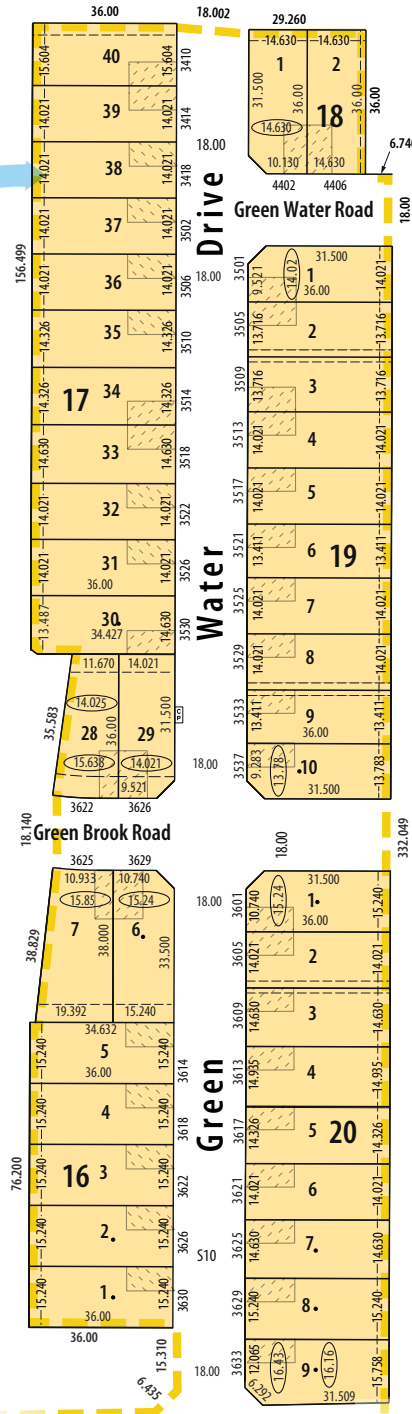
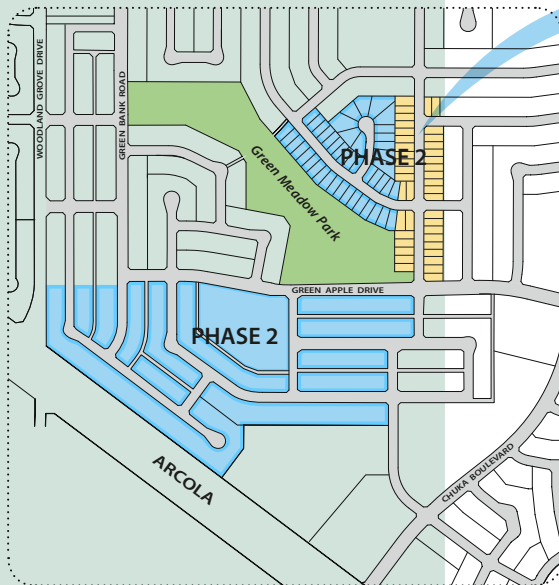
# The Greens on GARDINER



[www.greensongardiner.com](http://www.greensongardiner.com)



## PHASE 2 STAGE 1A



### LEGEND

- APPROXIMATE LOT WIDTH AT 6.00 m AND 18.0 m SETBACKS  
Setback widths may vary depending on orientation of house on lot
- DRIVEWAY LOCATION
- CITY OF REGINA & UTILITY EASEMENT LOCATION  
*Note: There is either a 3.0 m or 4.5 m joint use utility easement in the rear of each lot.*

Dimensions are in metres and decimals thereof.

This marketing plan\* is provided for your convenience only. Refer to the Developer's registered plans for exact lot dimensions.

\*Plan is subject to change

DEVELOPMENT  
MANAGED BY



3249 Eastgate Drive  
Regina, Saskatchewan S4Z 1A4  
Tel: 306-789-0891  
Fax: 306-775-2973  
Cell: 306-539-9120

[www.greensongardiner.com](http://www.greensongardiner.com)

*Kind to the environment and your lifestyle*